

SIU SCHOOL *of* MEDICINE

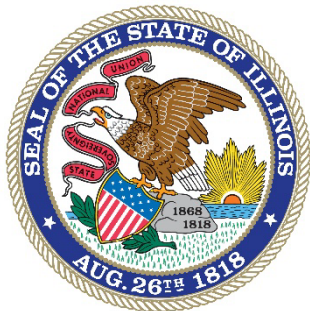


Karen Leavitt Stallman
Ag Resource Specialist

Center for Rural Health and Social Service Development SIU Carbondale



Farm Family Resource Initiative (FFRI)



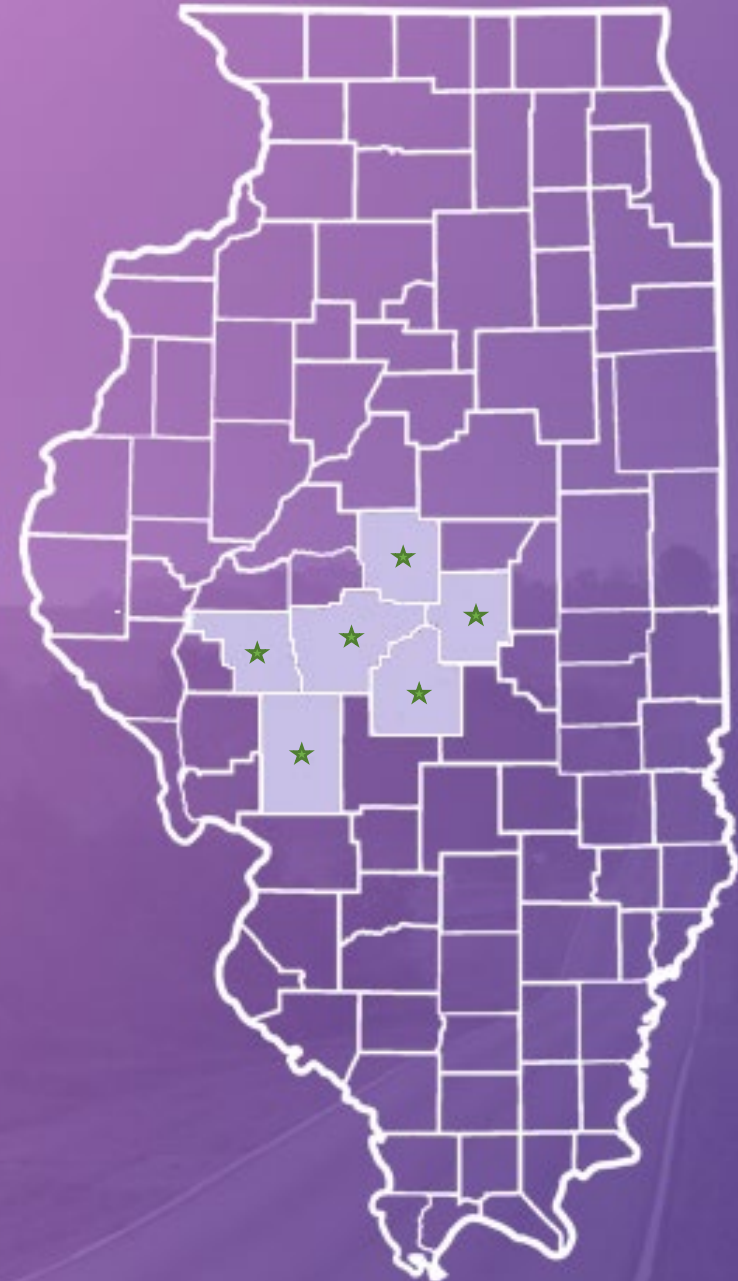
Senator Scott Bennett

Successfully secured funding for the initiative in the last 4 legislative sessions.



FFRI Pilot Counties

- Morgan
- Sangamon
- Macoupin
- Christian
- Logan
- Macon



FFRI Expansion

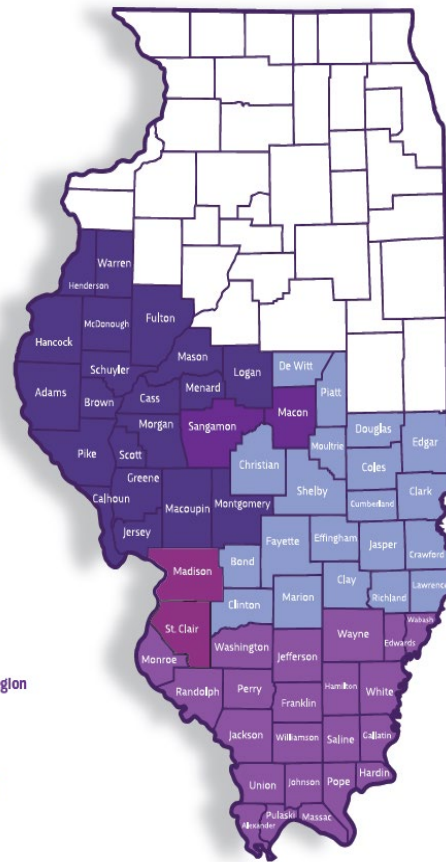
July 1, 2021:

Increase in state appropriation to expand to southern 66 counties

September 1, 2021:

USDA funding secured through Illinois Department of Agriculture
102 counties

SERVICE AREAS
BY REGION



FFRI

Seeks to improve the health and well-being of Illinois farm owners and families by:

- ✓ Identifying farm family needs, including mental health needs
- ✓ Compiling a list of available resources for farm families
- ✓ Creating new resources for farm families
- ✓ Developing a network of partners, both professional and otherwise to respond to farm family needs



FFRI Advisory Council

Advisory Council made up of Agriculture industry professionals from throughout the state meet monthly to:

- ⇒ Provide guidance
- ⇒ Provide support
- ⇒ Make recommendations
- ⇒ Carryout efforts



FFRI Website

- <http://www.siumed.org/farm>
- Recorded webinars
- Resources – state and national
- Blogs



Farm helpline

CALL OR TEXT
1-833-FARMSOS
(833-327-6767)

EMAIL
FarmFamilyResourceHelpline@mhsil.com



**WE ALL NEED SOMEONE
WE CAN TALK TO**

CALL OR TEXT
1-833-FARMSOS
(833-327-6767)

EMAIL
FarmFamilyResourceHelpline@mhsil.com

FREE | CONFIDENTIAL | 24/7
SOMEONE YOU CAN TALK TO

 
SIU MEDICINE
CENTER FOR RURAL HEALTH &
SOCIAL SERVICE DEVELOPMENT
siumed.org/farm

Someone is always here to listen. Anytime. Anywhere.
We know the struggles of farming and are here to help.



Telecounseling

Follow up counseling sessions for callers who need additional support.

Up to 6 counseling sessions with SIU School of Medicine counselors

Individual | Group | Couple

Provided at no cost. Paid for by grant.



WE ALL NEED SOMEONE WE CAN TALK TO

CALL OR TEXT
1-833-FARMSOS
(833-327-6767)

EMAIL
FarmFamilyResourceHelpline@mhsil.com

FREE | CONFIDENTIAL | 24/7
SOMEONE YOU CAN TALK TO

 
SIU MEDICINE
CENTER FOR RURAL HEALTH & SOCIAL SERVICE DEVELOPMENT
siumed.org/farm

Someone is always here to listen. Anytime. Anywhere.
We know the struggles of farming and are here to help.



Wallet Cards

WE ALL NEED
SOMEONE WE
CAN TALK TO

1-833-FARM-SOS



FREE | CONFIDENTIAL | 24/7
SOMEONE YOU CAN TALK TO

CALL OR TEXT: 1-833-FARM-SOS (1-833-327-6767)

EMAIL: FarmFamilyResourceHelpline@mhsil.com

Someone is always here to listen. Anytime. Anywhere.
We know the struggles of farming and are here to help.



Crisis hotlines:
National Suicide Prevention Lifeline: 800-273-8255
Crisis Text Line: Text HOME to 741741



FFRI Ag industry professional development

- ADM
- Farm Credit Illinois
- Others



Webinar Series presented via Zoom

An Introduction to Helping Skills

In this first session, participants will explore elements of a helping/therapeutic conversation in a 40-minute interactive webinar. Practical application specific to producers and their families will be highlighted, and the webinar will conclude with discussion, questions, and answers.

Recognizing Signs of Psychological Distress

In the second session, participants will learn to identify typical presentations of depression, anxiety, and suicidality, along with learning triage for suicidal ideation in this 40-minute interactive webinar. Practical application specific to producers and their families will be highlighted, and the webinar will conclude with discussion, questions, and answers.

Series hosted by Dr. Nick Weshinsky, a licensed professional educator in the state of Illinois who also holds national board certification in counseling. His counseling experience has included providing crisis intervention, along with providing outpatient counseling to individuals, couples, families, and groups. He now serves as a faculty member in the Southern Illinois University School of Medicine's Department of Medical Education.

For more information, please contact Karen Leavitt Stallman at karenstallman@siu.edu, 618-713-0759
www.siu.edu/orp



Nurse Scholar Program

Partnership with
Farm Credit Illinois
AgriSafe



The AgriSafe Nurse Scholar program is an online learning experience taught by expert health & safety educators. The course helps nurses increase their competence in prevention, identification, and assessment of diseases and conditions commonly experienced by people working in agriculture.

20 HOURS OF CONTINUING NURSING EDUCATION

We know that nurses are extremely busy, that is why this program is accessible OnDemand 24/7!

Upon completion of the program, nurses receive a digital badge to acknowledge and share their accomplishment.



DELIVERING SPECIALIZED CARE REQUIRES SPECIALIZED TRAINING!

"I am a farm owner/operator alongside my husband and a nursing professor as well as a doctoral student in population health nursing. This fit right into every aspect of my life and career."

-Susan Tracy, Nurse Scholar 2020



AgriSafe's Nurse Scholar 2022 - Webinar Series
Joint Provided by



In order to receive full contact hour credit for continuing nursing education, the participant must complete each webinar in its entirety, score an 80% or higher on each post-test, and complete and submit each evaluation form. No partial credit can be awarded at this time.

TOTAL CONTACT HOURS: 20.0

ANCC Accreditation Statement:

University of Louisiana at Lafayette College of Nursing and Allied Health Professions is accredited as a provider of nursing continuing professional development by the American Nurses Credentialing Center's Commission on Accreditation.



CONTACT DETAILS

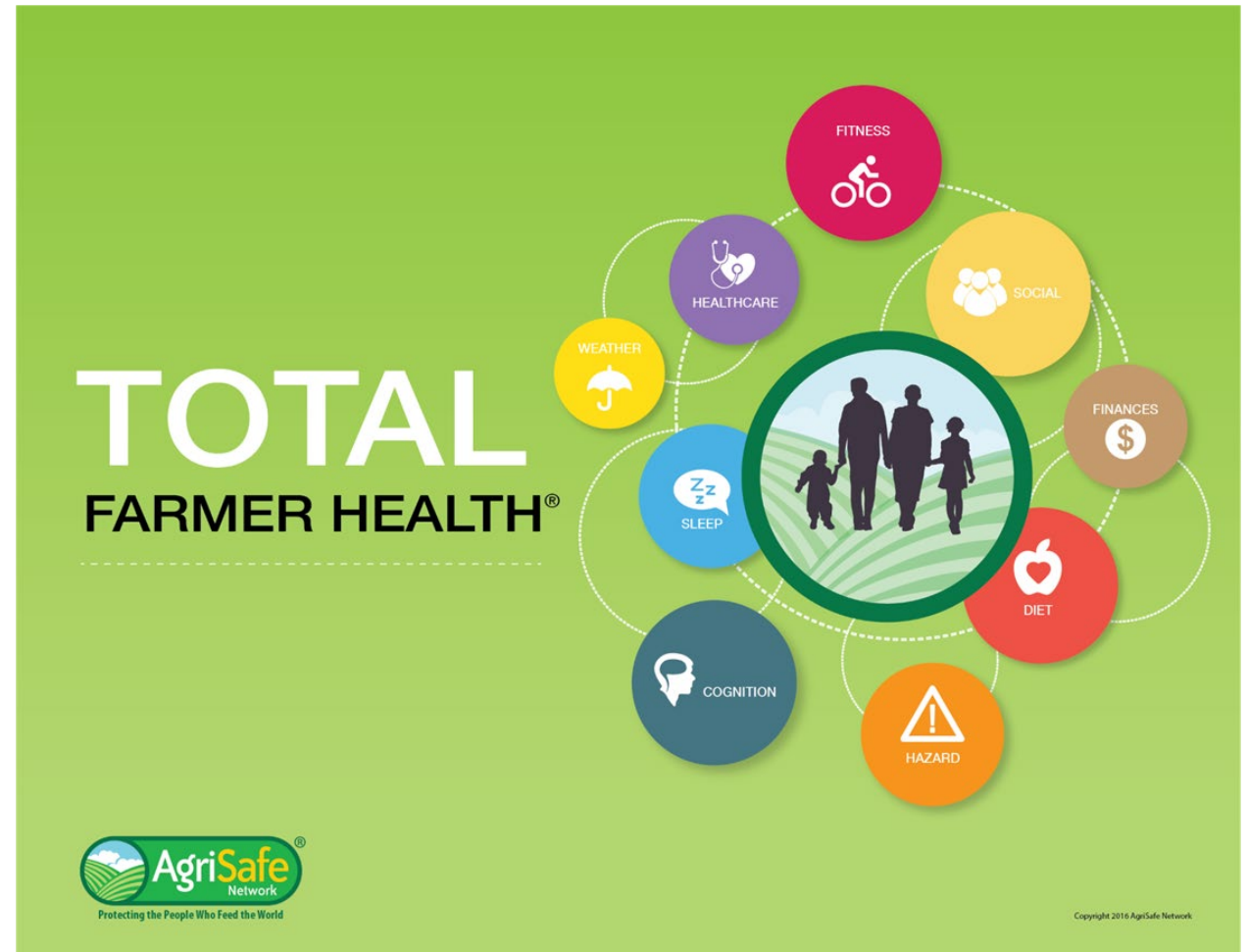
Email: nursescholar@agrisafe.org
learning.agrisafe.org/nurse-scholar-program



The Nurse Scholar program continues to underscore the importance of understanding and assessing the total spectrum of health and safety in an agricultural environment.

Nurse Scholar:

- provides 20 hours of continuing nursing education supported by the American Nurses Credentialing Center and the University of Louisiana-Lafayette
- is offered completely online/on-demand.
- Upon completion, a digital badge recognizing professional excellence is presented.
- addresses health and safety issues that are unique to agricultural workers and their families
- Invited guest faculty that represents a wide range of safety and health expertise across the country.



Nurse Scholar Program Webinar Series
Joint Provided by UL Lafayette Continuing Nursing Education Program & AgriSafe Network



In order to receive full contact hour credit for continuing nursing education programs, the participant must attend the program in its entirety, complete and submit the evaluation form.

CONTACT HOURS: 20.0

ANCC Accreditation Statement:

University of Louisiana at Lafayette College of Nursing and Allied Health Professions is accredited as a provider of continuing nursing education by the American Nurses Credentialing Center's Commission on Accreditation.

Online modules



Continuing Medical Education Credits **VIRTUAL SESSION**

To register visit siumed.edu/cpd
In the dropdown under 'Learners,' click on 'Online Learning.'

Farming is one of the most dangerous occupations, and the stressors faced by those in agriculture lead to mental illness, depression, anxiety, isolation, burnout, occupational hazards, accidents, illness and injury. This module provides training for health care professionals on mental and physical health issues experienced by those working in agriculture.

Visit siumed.edu/farm for more information about the Farm Family Resource Initiative hotline, telehealth counseling, resources, webinars and blogs.



Bonnie Landwehr, LCSW | SIU School of Medicine

Unique Stressors of Agriculture
The Pursuit of Agriculture and its Impact on Families



Monica McConkey, LPC | Eyes on the Horizon Consulting

Aging on the Farm



James Hubler, MD, JD | Emergency Physician Staffing Solutions

Agricultural Trauma



Lynn Weis, Community Health
Worker

lweis52@siumed.edu

618.713.9139

Available in all 102 counties



Youth Mental Health First Aid

- Provides adults with tools and training to identify, understand and respond to stress, substance use and mental health challenges of youth age 12-18
- Offers practice in intervention strategies with real life situations
- Gain knowledge of resources available for those in need

Curriculum developed by National Council for Mental Health



Who should know Mental Health First Aid

Parents

Teachers

School Staff

Coaches

Faith Leaders

Law Enforcement

Community/ Youth Center Staff

Youth Group Leaders

First Responders



FFRI

What could you do?

Wallet stand
with cards

Hand out
materials at
events

Ad/article in
local paper

Fair time



FFRI

What could you do?

Annual
meeting

Board
meetings

Materials at
rural clinics

Other

Guest blog/article
Digital ads
Video



Contact:

Karen Leavitt Stallman

Center for Rural Health and
Social Service Development

kstallman88@siumed.edu

618.713.0759

Siumed.org/farm

