



Creating Collaborations and Partnerships for Community Success

March 31, 2026



Southern Illinois Team



Woody Thorne, MSeD
Chief Development Executive
Southern Illinois Healthcare (SIH)



Deb Barnett, PhD
Executive Director
Southern Illinois Now (SI Now)



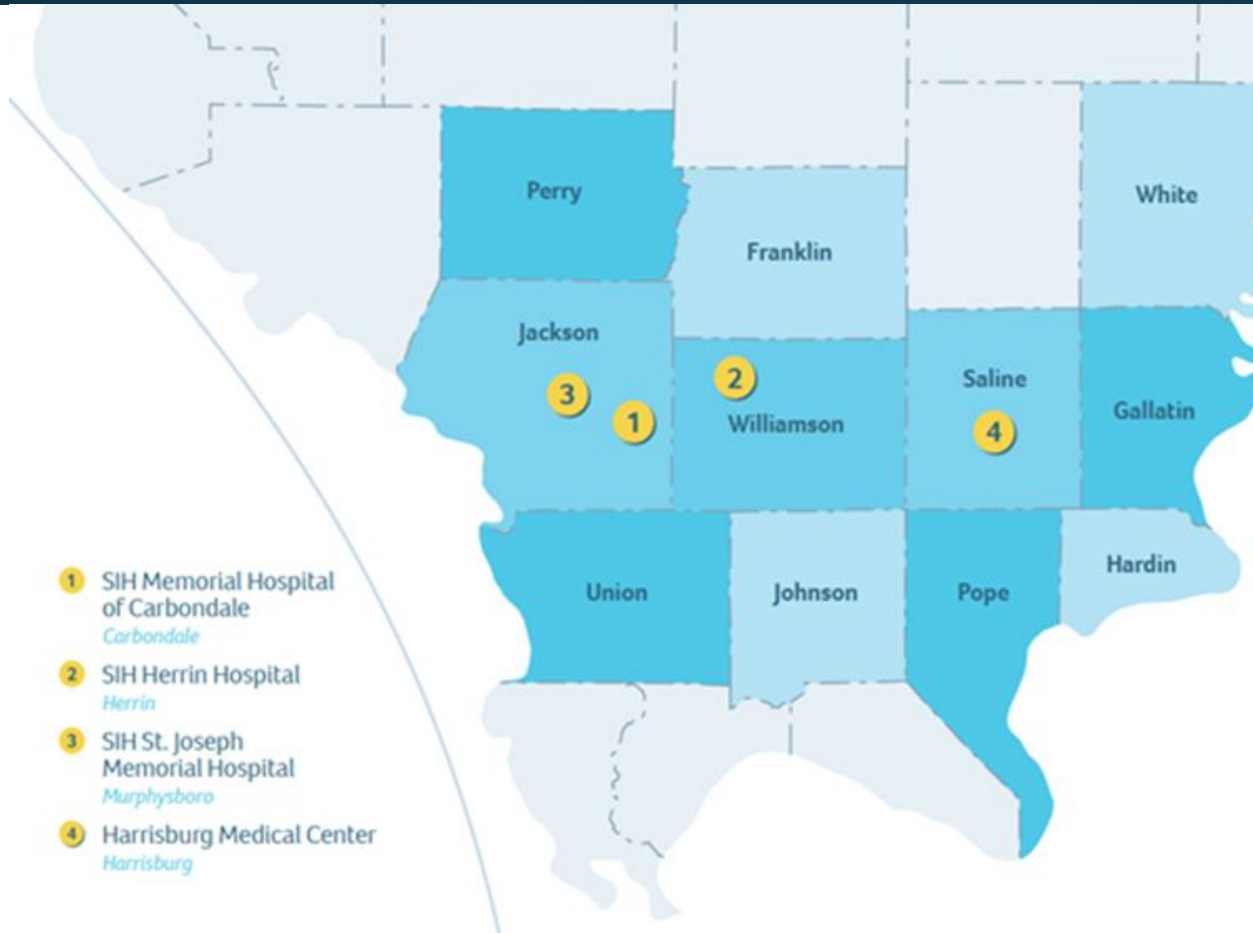
Kathy Lively, MSeD
Board Member and Workforce Expert
Southern Illinois Now (SI Now)

Objectives

- SIH Overview: Community Benefits and Economic Impact
- SIH and Economic Development
 - SI Now's Origin
 - Regional Partnerships
 - Funding Model and Sustainability
 - Priorities and Progress
- Fireside Chat



SIH Overview



Mission:

We are dedicated to improving the health and well-being of all the people in the communities we serve.

Woody Thorne, SIH Chief Development Executive
ICAHN Economic Summit, March 31, 2026





**Total Community Benefits
for Those We Serve
(FY25):**

\$ 157,878,920

SIHS – Unreimbursed Services
(at cost) – Medicare, Medicaid and Charity
Care

\$ 143,504,384

Community Benefits Programs
(Community Health Improvement, Grants,
Contributions & Sponsorships, Community
Bldg. Activity, Research, Subsidized Health
Services, Medical Education)

\$ 14,375,536

SIH Community Benefits Ten Year Review (FY16-25)

**Total Community
Benefits for Those We
Serve:**

\$1,491,885,747

**SIHS – Unreimbursed Services (at
cost)**

\$ 1,418,754,521

Community Benefits Programs

• \$73,131,226



SIH FY25 Economic Impact



				Direct Economic Impact	Direct and Indirect Total Economic Impact **
					No. of Jobs
No. of SIH Employees:				4,025	9,800
Salaries & Benefits				400,278,073	959,026,235
Goods & Services				382,925,497	917,451,198
Capital				25,148,470	60,253,219
TOTAL				808,352,040	1,936,730,653

'Source: Estimates of the economic benefits of Illinois hospitals were based on regional Input-Output Modeling System II (RIMS-II) developed by the U.S. Bureau of Economic Analysis (BEA). The Final Demand Multipliers, obtained from BEA RIMS II, were applied to the Medicare cost report data of hospital jobs and spending to obtain the "ripple effect" of jobs and spending throughout the economy.

Community Affairs Team



SIH Community Benefits

SIH Community Health Needs Assessment and work of SIH Community Benefits collaborating with the HSIDN



Fund Development
Resources to drive SIH efforts: SIH Foundation & Grants



SI NOW

Partnering to develop a regional hub for economic development and unified voice for the 17 southern counties of Illinois to advance our region as a great place to live, work, and do business.

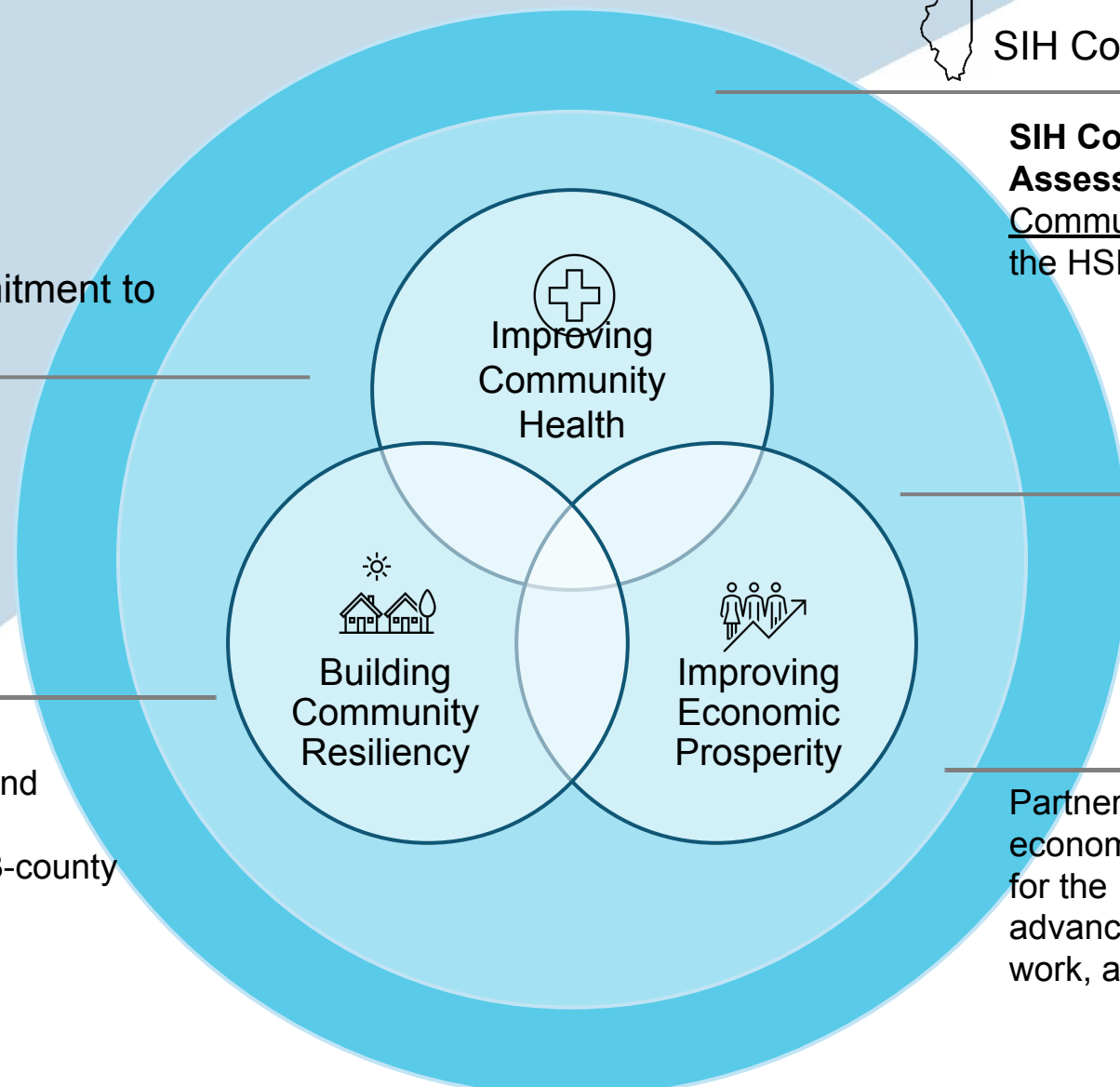


Mission & Commitment to Patient Care



RHCC and SPARC

Collaboration and Resources to plan and prepare for medical emergencies in a 23-county area



Improving Community Health

Building Community Resiliency

Improving Economic Prosperity



**Live Here.
Work Here.
Do Business Here.**

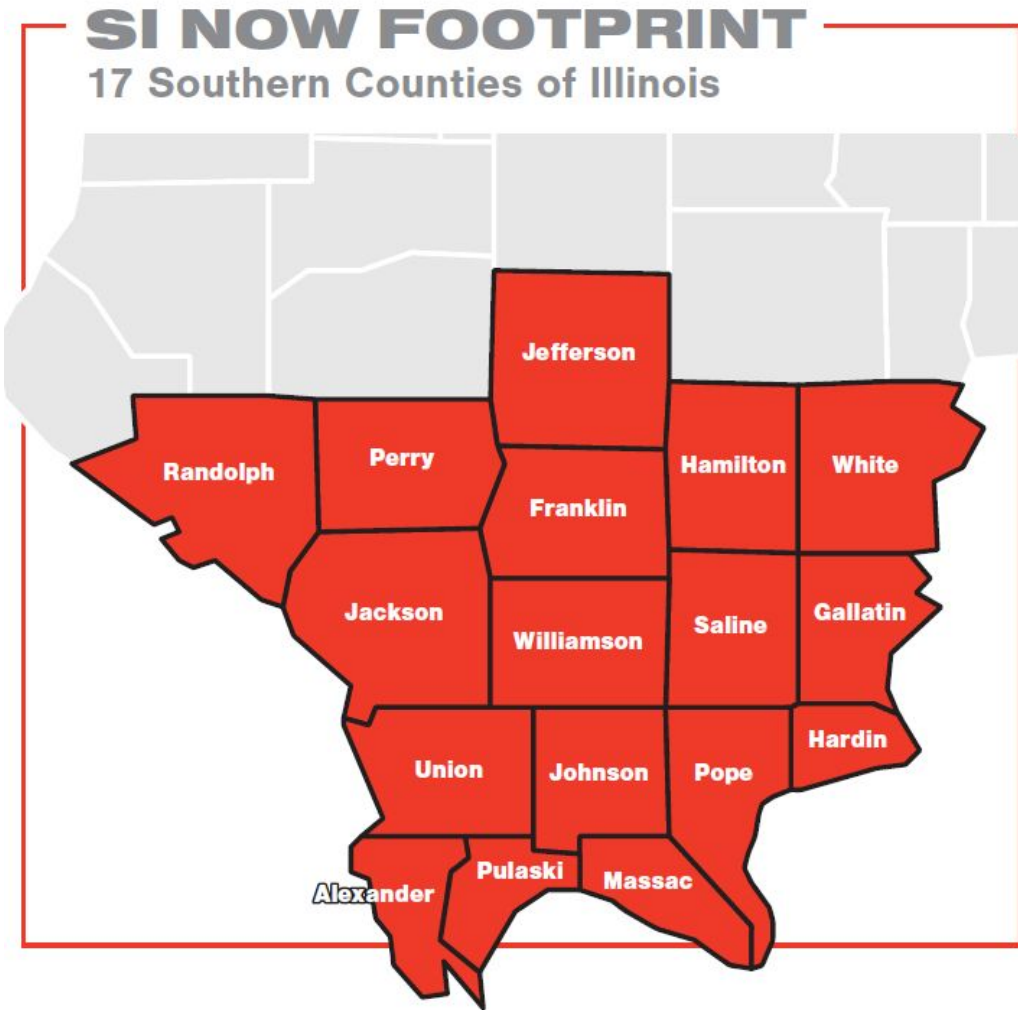
**SI
NOW**

A Southern Illinois Success Initiative

SouthernIllinoisNow.org



SI Now: Origin Story (The Why)



Regional Partnerships Collaboration Over Duplication

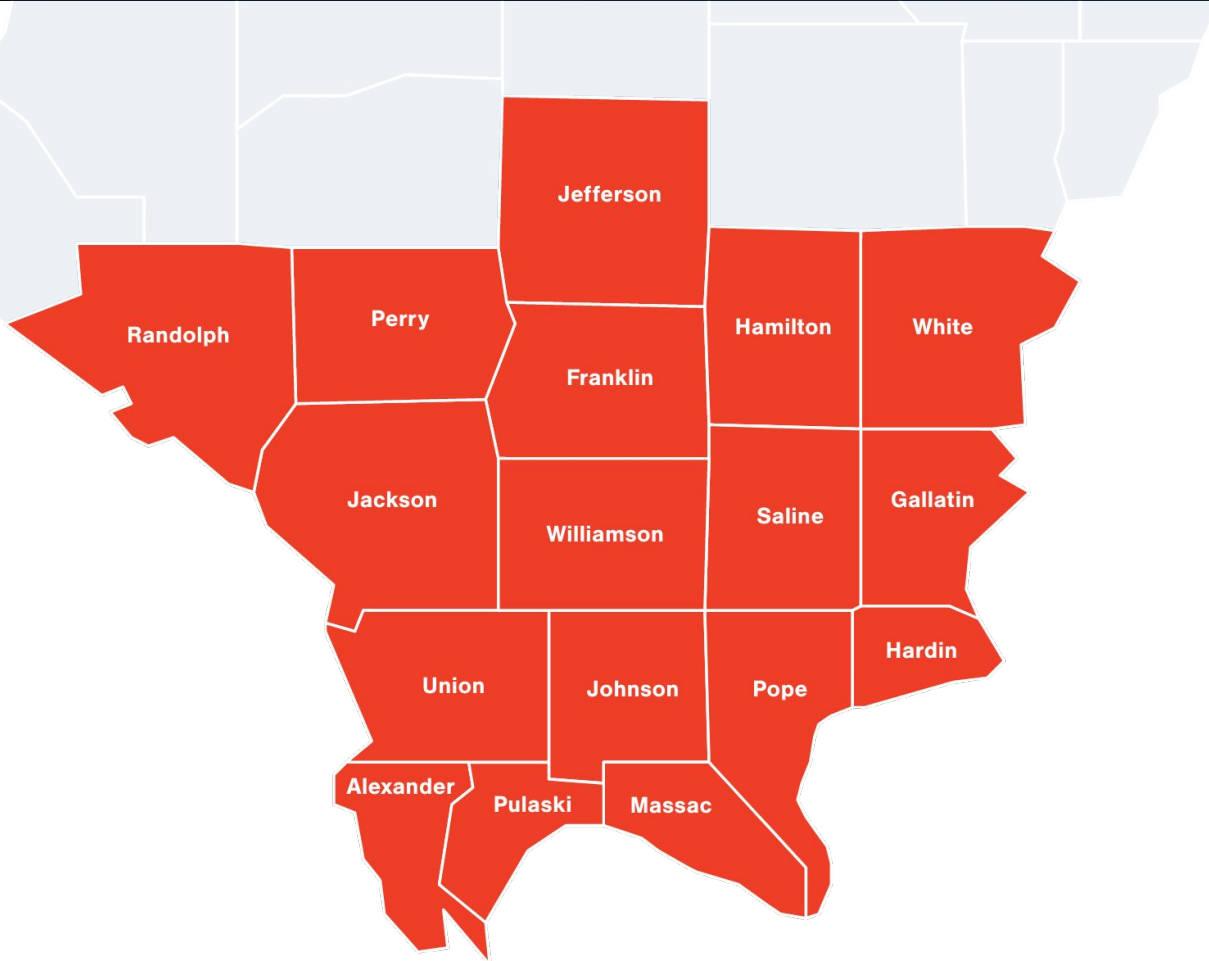


Priorities: Regional Plan at a Glance



Southern Illinois' Regional Economic Development Hub

A Unified, Collaborative Approach



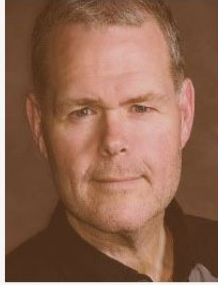
Southern Illinois Now is the region's economic development hub—uniting communities, industries, and stakeholders behind one vision.

Powered by private-sector expertise and collaborative public leadership, SI Now partners to accelerate business growth, strengthen workforce development, and amplify

Business Led. Business Supported.



Kevin Beckemeyer
President/CEO,
Legence Bank



Rodney Cabaness
Co-Owner,
Black Diamond Harley
Davidson



John Dosier
President/CEO
First Southern Bank



Steve Falat
General Manager
Market Manager
River Radio



Dale Fowler
State Senator,
Illinois 59th District



Tony Iriti
Executive Director,
Jefferson County
Development Corporation



Austin Lane
Chancellor,
Southern Illinois University



Lynn Andersen Lindberg
Executive Director,
Southern Illinois University
Research Park



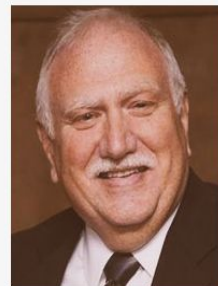
Kathy Lively
CEO,
Man-Tra-Con Corporation



Robert J. May
President & CEO,
Banterra Bank



Cary Minnis
Executive Director,
Greater Egypt
Regional Planning &
Development Commission



Mike Monchino
Principal Member,
Monchino Management



Will Stephens
Mayor,
City of Murphysboro



Woody Thorne
Vice President of
Community Affairs &
Chief Development Officer,
Southern Illinois Healthcare



Michael Tison
Tison Wealth Management



Tom Welge
President,
Gilster-Mary Lee



Patrick Windhorst
State Representative,
Illinois 118th District and
Board President of
OneShawnee

Business Led. Business

Supported Model and Sustainability

VISIONARY
PARTNER



CHAMPION PARTNER



FOUNDER PARTNERS



SILVER PARTNER



Business Led. Business

Supported.

Number of Investor Partners Doubled in 2025

Southern Illinois Now **more than doubled its number of investor partners in 2025 from 11 to 25**—a powerful **vote of confidence in the region's future**. These partners aren't just believing in Southern Illinois; they're actively investing in its growth, fueling momentum for new opportunities, stronger communities, and long-term economic success. Together, we're building a region that's on the map and on the move.

**VISIONARY
PARTNER**



FOUNDER PARTNERS



A VERY SPECIAL THANKS TO



Welcome to New Partners in 2026

QHP - Assured Partners

Community College Collaborative

John A. Logan College, Rend Lake College, Kaskaskia College, Shawnee Community College, Southeastern Illinois College, Southwestern Illinois College

New as of 3/27/26



CHAMPION PARTNERS



Silver Partners

Ameren Illinois
E. T. Simonds
Rend Lake Conservancy District

Bronze Partners

Align Wealth Management
Barber Murphy
Horner & Shifrin
Illinois American Water



12

Active Projects
Representing Four
Industry Types
and 1500+ jobs

Industry Type



- Ag-Related
- Food Processing
- Outdoor Economy
- Other
- BioManufacturing
- Life Sciences
- TDL
- Energy
- Manufacturing
- Tech



Priority #1 Business Growth and Job Creation

- Healthcare
- Manufacturing
- Technology & Trades
- Food and Natural Resources
- Outdoor Economy

SOUTHERN ILLINOIS BUSINESS RETENTION & EXPANSION

Our local businesses that have invested in the region for years are the backbone of Southern Illinois' economy and SI Now is committed to strengthening that foundation. In 2026, our goal is to **directly engage more than 100 Southern Illinois companies in the region's top industry sectors to ensure our region's existing businesses remain strong, competitive, and growing right here at home.** To achieve this, we certified nearly 40 regional stakeholders in business retention and expansion (BRE) strategies as partners to further accelerate business outreach and progress in 2026. Here's a glimpse into a few of the companies, people and places visited and assisted in 2025.



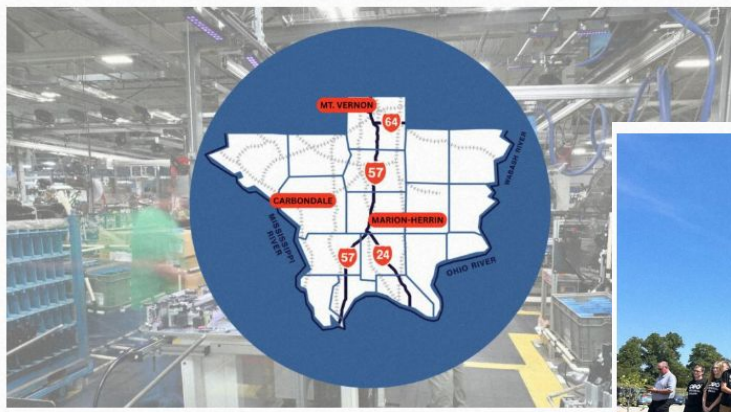
Education and Workforce Task Force

50+ Partners
Secondary
Post-Secondary
y
Workforce
Industry



Employer Engagement
Regional Collaboration
and Convening Partner

Marketing the Region National Brand and Local Pride



Southern Illinois Outpaces Big Metros in 2025 National Rankings



Manner Polymers Opens Plastic Industry's Most Advanced Facility in Mt. Vernon

vol. 6 / 2026

Groundbreakings & Ribbon Cuttings
From Developing New Energy
A Showcase of Regional Growth
pp.10

Small Towns, Big Opportunities
The Vision Drives Momentum
pp.14

Helping Businesses Succeed
A Special Day to Shine
Attracting Investor Healthcare Costs
pp.28

Solutions Build Here
Celebrating 50 Years
Marketing an Economic Report
pp.48

17 COUNTIES ONE MISSION

Take, Share & Enjoy!
COPY • COMMERCE ONLY

Celebrating Southern Illinois: People, Places, and Progress
www.SouthernIllinoisNow.org



SI NOW
Business Facilities
The Source For Site Selectors

Business Facilities Names Southern Illinois a 2025 Top Logistics Hub



Why SI: Higginson Farms Mercantile

Taking Care of Residents - Robotics

SIH Herrin Hospital Launches Robotic-Assisted Surgery with the Vinci Xi®: A Bold Step into the Future of Medicine

Expanding Robotic Capabilities in Southern Illinois

As SIH Herrin Hospital looks to the future, its investment in robotic-assisted surgery represents a commitment to delivering the most advanced surgical care possible. With a growing roster of robotic surgeons and state-of-the-art technology, SIH is poised to continue transforming the healthcare landscape in Southern Illinois, making it a beacon of medical excellence in the region.

The Future of Surgery at SIH

With the addition of the Vinci Xi, SIH's robotic surgical team is now able to offer an even broader spectrum of minimally-invasive and high-precision procedures, both across a wide range of medical specialties. This investment in cutting-edge technology, combined with the hospital's commitment to patient safety and excellence, is a testament to the hospital's dedication to providing the highest quality of care to its patients.

"We've always been about being the best care we can give, and now we're adding this technology," Dr. Arnold stated. "This is a vital system for our patients, and it's a testament to our commitment to providing the highest quality of care. Robotic-assisted surgery offers us a new level of precision, and being the first hospital in the region to offer this technology is a true honor."

"We've always been about being the best care we can give, and now we're adding this technology," Dr. Arnold stated. "This is a vital system for our patients, and it's a testament to our commitment to providing the highest quality of care. Robotic-assisted surgery offers us a new level of precision, and being the first hospital in the region to offer this technology is a true honor."

Taking Care of Residents - Robotics

SIH Herrin Hospital Launches Robotic-Assisted Surgery with the Vinci Xi®: A Bold Step into the Future of Medicine

Expanding Robotic Capabilities in Southern Illinois

As SIH Herrin Hospital looks to the future, its investment in robotic-assisted surgery represents a commitment to delivering the most advanced surgical care possible. With a growing roster of robotic surgeons and state-of-the-art technology, SIH is poised to continue transforming the healthcare landscape in Southern Illinois, making it a beacon of medical excellence in the region.

The Future of Surgery at SIH

With the addition of the Vinci Xi, SIH's robotic surgical team is now able to offer an even broader spectrum of minimally-invasive and high-precision procedures, both across a wide range of medical specialties. This investment in cutting-edge technology, combined with the hospital's commitment to patient safety and excellence, is a testament to the hospital's dedication to providing the highest quality of care to its patients.

"We've always been about being the best care we can give, and now we're adding this technology," Dr. Arnold stated. "This is a vital system for our patients, and it's a testament to our commitment to providing the highest quality of care. Robotic-assisted surgery offers us a new level of precision, and being the first hospital in the region to offer this technology is a true honor."

"We've always been about being the best care we can give, and now we're adding this technology," Dr. Arnold stated. "This is a vital system for our patients, and it's a testament to our commitment to providing the highest quality of care. Robotic-assisted surgery offers us a new level of precision, and being the first hospital in the region to offer this technology is a true honor."





Let's Chat

